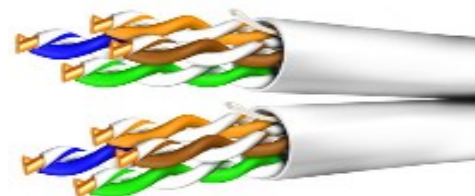


ENHANCED SIAMESE CATEGORY 5E

24AWG 8 PAIR BONDED

REV 1.0 10/18/06



PART NUMBER: 244P5XS

DESCRIPTION: 24AWG 8 PAIR 350MHz ENHANCED CAT5E, SOLID BARE COPPER, POLYOLEFIN INSULATION, SIAMESE/ZIP CONSTRUCTION, RIP CORD IN EACH LEG, PVC JACKET, TESTED FOR 155ATM AND 622 ATM, PVC JACKET, CEC/C(UL) CMR, NEC(UL) CMR, UL444

PHYSICAL CHARACTERISTICS:

TEMPERATURE RATING: -20°C TO +80°C
CONDUCTOR/PAIR COUNT: 16 CONDUCTORS, 8 TWISTED PAIRS
CONDUCTOR MATERIAL: BARE COPPER
GAUGE & STRANDING: 24 AWG, SOLID
COLOR CODE: WHITE/BLUE STRIPE, BLUE
 WHITE/ORANGE STRIPE, ORANGE
 WHITE/GREEN STRIPE, GREEN
 WHITE/BROWN STRIPE, BROWN

ELECTRICAL CHARACTERISTICS:

MAX. OPERATING VOLTAGE: 300 V RMS
NOM. MUTUAL CAPACITANCE @ 1 KHZ: 15 pF/FT.
MAX CAPACITANCE UNBALANCE (pF/100M): 66 pF/100M
NOM. VELOCITY OF PROPAGATION: 70%
MAX. DELAY (ns/100M): 510 ns/100m
MAX. DELAY SKEW (ns/100M): 25 ns/100M
MAX. CONDUCTOR DC RESISTANCE @ 20 DEG.C: 9 Ohms/100M
MAX. DCR UNBALANCE @ 20 DEG. C: 3%

INSULATION MATERIAL: POLYOLEFIN

JACKET MATERIAL & THICKNESS: PVC

JACKET COLOR: BLUE

RIPCORD: YES

OUTSIDE DIAMETER: .200 x .415"

MAXIMUM PULLING TENSION: 50 LBS

MINIMUM BEND RADIUS: .8"

PACKAGING: REELS

CABLE WEIGHT: 45 LBS/ 1000 FT.

NOM. ATTENUATION:

	<u>MHZ</u>	<u>DB/100 M</u>	<u>MHZ</u>	<u>DB/100 M</u>
	1	2.0	62.5	16.8
	4	4.0	100	21.7
	8	5.7	155	27.7
	10	6.4	200	32.0
	16	8.1	250	36.4
	20	9.2	300	40.5
	25	10.3	310	41.3
	31.25	11.6	350	44.3

UL CRITERIA:

UL TYPE OR STYLE: CEC/C(UL) CMR, NEC(UL) CMR, UL444
FLAME RESISTANCE: UL1581 VERTICAL TRAY

NOTES:

1. Semi-tubed jacket with glossy finish.
2. Footage markers printed every two feet.
3. While Signature Wire Corp. has made every reasonable effort to ensure the accuracy of these specifications, information contained herein may be subject to error and omission and to change without notice. Signature Wire Corp. provides these specifications on an "AS IS" basis, with no representations or warranties, whether expressed, statutory or implied.